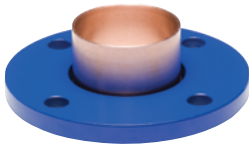


### FLANGES ONLY

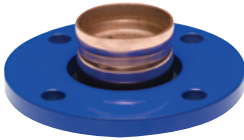
All copper flanges available in 125/150lb and 300lb applications. P.O.A. Where not listed.

#### CLASS 125lb/150lb



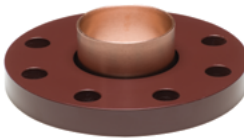
CODE	SIZE	WEIGHT	PRICE
BF015	1.5"	3.24	77.69
BF002	2"	4.36	99.94
BF0025	2.5"	6.15	122.12
BF003	3"	7.0	130.46
BF004	4"	11.0	192.34
BF005	5"	14.1	421.28
BF006	6"	18.7	438.24
BF008	8"	30.09	974.45

#### CLASS 125/150lb Roll Grooved



CODE	SIZE	WEIGHT	PRICE
WRG1020	2"	4.36	128.81
WRG1025	2.5"	6.15	152.52
WRG1003	3"	7.0	160.63
WRG1004	4"	11.0	233.90
WRG1005	5"	14.1	380.99
WRG1006	6"	18.7	414.33

#### CLASS 300lb



CODE	SIZE	WEIGHT	PRICE
WBG3015	1.5"	5.1	163.06
WBG3020	2"	6.0	167.59
WBG3025	2.5"	8.85	204.20
WBG3030	3"	11.7	223.83
WBG3040	4"	19.0	306.57
WBG3050	5"	25.0	639.02
WBG3060	6"	31.6	668.98
WBG3080	8"	53.9	1265.49

#### CLASS 150lb Copper Coated



CODE	SIZE	WEIGHT	PRICE
CC015	1.5"	5.4	72.95
CC002	2"	5.9	93.84
CC025	2.5"	8.1	114.67
CC003	3"	9.3	122.50
CC004	4"	13.5	180.60
CC005	5"	19.5	395.57
CC006	6"	25.2	411.49

EFFECTIVE AUGUST 01<sup>ST</sup> 2021

### BLACK STEEL ROLLED GROOVE FLANGES

#### CLASS 150lb



CODE	SIZE	WEIGHT	PRICE
BSRG002	2"	5.4	57.61
BSRG025	2.5"	7.5	72.02
BSRG003	3"	8.0	86.42
BSRG004	4"	14.4	130.86
BSRG005	5"	17.0	163.13
BSRG006	6"	22.6	190.03
BSRG008	8"	33.7	214.59
BSRG0010	10"	57.6	381.36

### PRESS FIT FLANGES ONLY

All copper flanges available in 125/150lb and 300lb applications. P.O.A. Where not listed.

#### CLASS 150lb



CODE	SIZE	WEIGHT	PRICE
SF002	2"	5.1	133.96
SF025	2.5"	7.2	157.77
SF003	3"	7.65	165.20
SF004	4"	12.8	196.46

EFFECTIVE AUGUST 01<sup>ST</sup> 2021