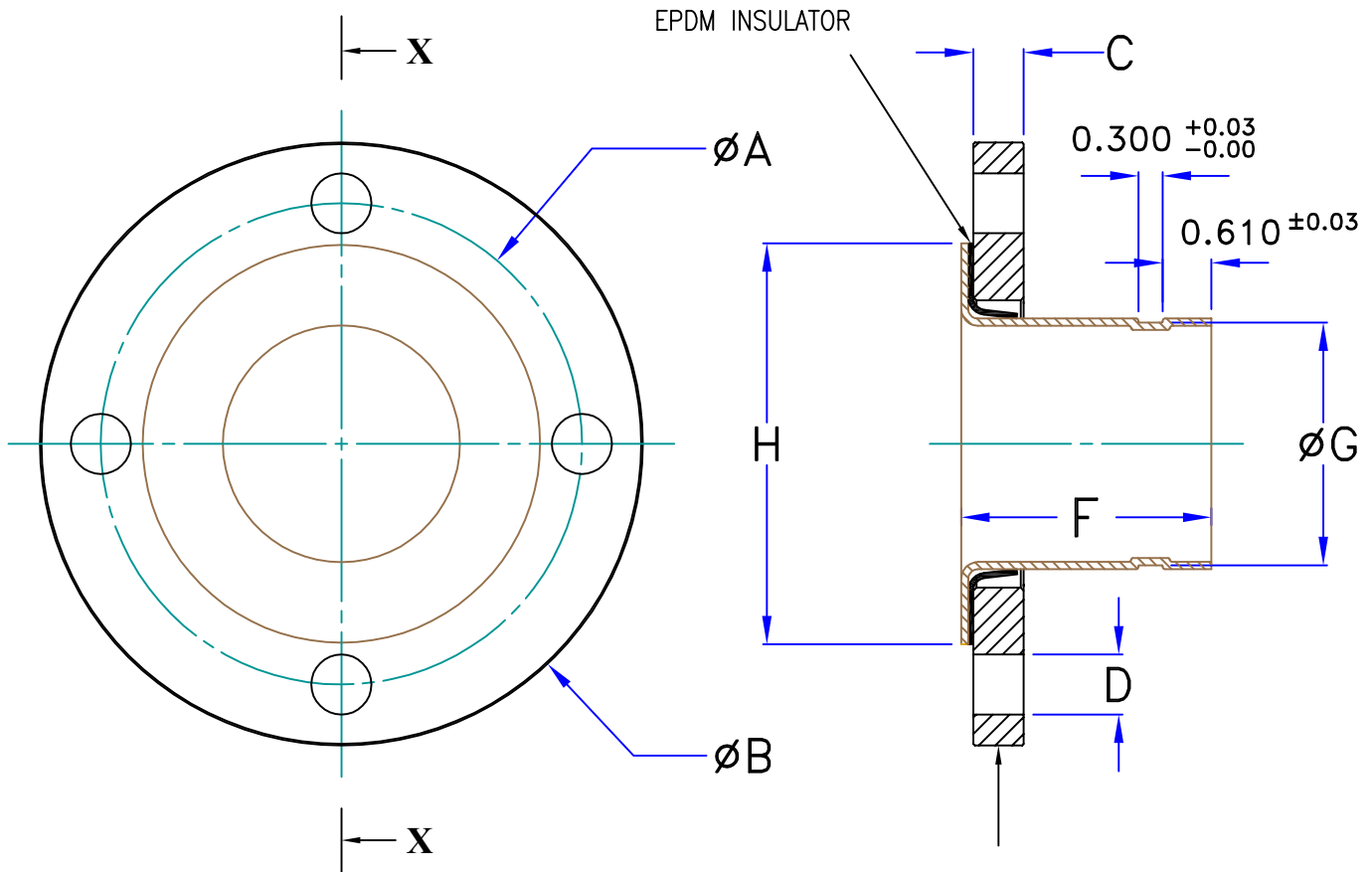
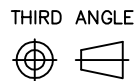


Section X-X



EDGE OF FLANGE MARKED WITH
 CTS (Size) INCH 150LB - ANSI B16.5 (Heat Number)
 EG: CTS 3 INCH 150LB - ANSI B16.5 11F24702
 (* If Specified)

	2 INCH	2.5 INCH	3 INCH	4 INCH	5 INCH	6 INCH
Code	WRG1020	WRG1025	WRG1003	WRG1004	WRG1005	WRG1006
A. Bolt Circle Diam	4.75	5.50	6.00	7.50	8.50	9.50
B. Flange Diameter	6.00	7.00	7.50	9.00	10.0	11.0
C. Flange Thickness	0.63	0.63	0.63	0.71	0.75	0.87
No. Bolt Holes	4	4	4	8	8	8
D. Bolt Hole Diam	0.75	0.75	0.75	0.75	0.87	0.87
Cu tube End OD	2.125	2.625	3.125	4.125	5.125	6.125
F. Cu Piece Length	2.63	2.00	2.44	2.88	3.94	4.31
G. Groove Dia (+0/-0.02)	2.029	2.525	3.025	4.019	5.019	5.999
H. Cu Flange OD	3.70	4.20	5.00	6.20	7.30	8.40



ANSI B16.5 150LB POWDER COATED
 CTS FLANGE & COPPER ROLL GROOVED PIECE

DRN BY: FAS
 DATE: MAR 17-2017
 CHK BY: FAS
 DATE: MAR 17-2017
 APR BY: FAS
 DATE: MAR 17-2017



Dimension Unit.
 Inches (Decimal)

Drawing No.
 USA-20170317-106

Rev. A

FLANGE